

CONTENTS

1. BRIEF OVERVIEW OF THE INDOOR LIGHTING RECEIVER	3
2. SAFETY - IMPORTANT INFORMATION	3
2.1 Installation and commissioning	3
2.2 Operating	3
2.3 Environment	3
3. CONTENTS OF THE KIT AND TOOLS REQUIRED	3
3.1 List of parts	3
3.2 Tools required	4
4. THE INDOOR LIGHTING RECEIVER IN DETAIL	4
4.1 Components	4
4.2 Technical data	4
5. MOUNTING THE INDOOR LIGHTING RECEIVER	4
5.1 Before mounting the indoor lighting receiver	4
5.2 Recessed mounting	4
5.3 Mounting and assembly on a surface	5
6. PROGRAMMING THE CONTROL POINT	6
6.2 Identifying the control point	6
6.3 One-touch point	6
6.4 Point with Up/STOP/Down buttons	8
6.5 Timer	9
6.6 Telis 1 RTS/Telis Soliris RTS remote controls	10
6.7 Telis 4 RTS/Telis 4 Soliris RTS remote controls	11
7. REPLACING A LOST OR BROKEN CONTROL POINT	11
8. EVERYDAY USE OF THE INDOOR LIGHTING RECEIVER	12
8.1 Operating	12
8.2 Maintenance	12
9. PROBLEMS WITH THE INDOOR LIGHTING RECEIVER?	13
10. CHANGING THE FUSE	13

► **Somfy's expertise delivers guaranteed satisfaction.**

Thank you for choosing the Somfy indoor lighting receiver. Read these instructions carefully before installing and using the indoor lighting receiver.

Somfy develops, manufactures and sells motors and automatic control devices for domestic equipment. Motorisation systems for gates, garage doors and roller shutters, alarm systems, lighting controls, heating thermostats; all Somfy products are designed to meet your expectations in terms of safety, comfort and energy efficiency.

At Somfy, the pursuit of quality is a continuous process of improvement. Somfy's reputation has been built upon the reliability of its products and the Somfy brand is synonymous with innovation and technological expertise worldwide.



Somfy hereby declares that this product conforms to the essential requirements and other relevant provisions of Directive 1999/5/CE. A Declaration of Conformity is available at www.somfy.com/ce.
Usable in EU, CH and NO.

1. BRIEF OVERVIEW OF THE INDOOR LIGHTING RECEIVER

The indoor lighting receiver is used to control one or more incandescent or halogen bulbs from a single control point equipped with Radio Technology Somfy (RTS).

The indoor lighting receiver is fitted in place of the original switch. The RTS control point to which it is connected becomes the new switch for controlling lighting in the room. The indoor lighting receiver cannot be used to control neon lighting, a 24 V bulb supplied by a transformer, or a bulb with a dimmer switch.

The maximum power of all the bulbs connected to an indoor lighting receiver is 500 W.

The indoor lighting receiver can be used as:

- an individual control - one indoor lighting receiver controls one or more maximum 500 W bulbs;
- a group control - several indoor lighting receivers are controlled from a single control point (advanced installation function), or;
- a multiple control - one indoor lighting receiver is controlled by several control points (up to a maximum of 12) (advanced installation function).

2. SAFETY - IMPORTANT INFORMATION

2.1 Installation and commissioning

Read these instructions carefully before installing and using the indoor lighting receiver.

These instructions describe the installation, commissioning and use of the indoor lighting receiver.

Before beginning installation, make sure that the indoor lighting receiver is compatible with the equipment and associated accessories.

Any incorrect use will invalidate the warranty and Somfy's liability.

2.2 Operating

Always make sure the power supply to the indoor lighting receiver is off before beginning any installation, mounting, disassembly or maintenance operations on the indoor lighting receiver and associated bulbs.

- Do not allow children to play with the fixed control points. Keep remote controls out of the reach of children.
- Do not wet the indoor lighting receiver or immerse it in liquids.
- Only use maintenance products recommended by Somfy.

2.3 Environment



Damaged electrical or electronic products, such as used batteries, should not be disposed of with household waste. Please take them to a collection point or an approved centre to ensure they are recycled correctly.

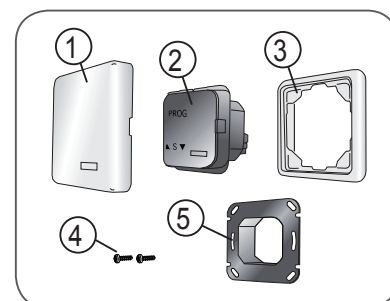
3. CONTENTS OF THE KIT AND TOOLS REQUIRED

3.1 List of parts

Before beginning installation and commissioning of the indoor lighting receiver, check that all parts listed in the following table are present in the correct quantity (Q):

No.	Components	Q.
1	Cover	1
2	Indoor lighting receiver	1
3	Frame	1
4	Screw	2
5	Bracket	1

Caution: The frame (3) can only be used for recessed mounting.



3.2 Tools required

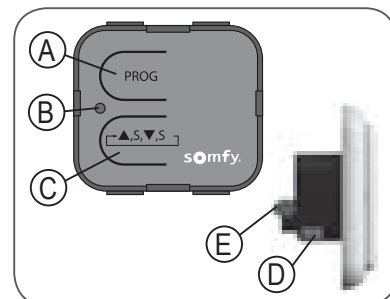
- Appropriate screwdriver for the screws to be used
- Insulated flathead electrician's screwdriver
- Drill and drill bit
- Pencil



4. THE INDOOR LIGHTING RECEIVER IN DETAIL

4.1 Components

- A. PROG button
- B. Indicator light
- C. Manual On/Off control button
- D. Fuse
- E. Electrical connection terminal.



4.2 Technical data

Dimensions in mm (H x w x d): 80 x 80 x 45 mm

Operating temperature: + 5°C to + 40°C

Index protection rating: Inside use, in a dry room - IP 30

Frequency: 433.42 MHz

Range: 20 m through two concrete walls; 200 m in open space

Power supply: 230 V; 50 Hz

Fuse: 3.15 A

Power: 500 W max.

5. MOUNTING THE INDOOR LIGHTING RECEIVER

5.1 Before mounting the indoor lighting receiver

5.1.1 Distances

- Minimum distance to be kept between an indoor lighting receiver and the ground: (e.g. 150 cm between any RTS control points and/or between any control point and any motor).
- Minimum distance to be kept between an indoor lighting receiver and another RTS component: (e.g. 30 cm between any RTS control points and/or between any control point and any motor).
- Minimum distance to be kept between two indoor lighting receivers: (e.g. 20 cm between any RTS control points and/or between any control point and any motor).

5.1.2 Conditions

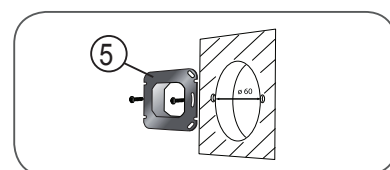
Attention: Do not attach the indoor lighting receiver to a metal surface.

- The indoor lighting receiver is only to be installed indoors.
- Mount the indoor lighting receiver in a housing for recessed mounting which is 60 mm in diameter (minimum depth: 40 mm) or in a Somfy housing for surface mounting (not supplied).
- Always leave the indoor lighting receiver's front panel clearly accessible; never place anything in front.
- Check the radio range after the indoor lighting receiver has been mounted. The radio range is limited by the radio appliance control standards.

5.2 Recessed mounting

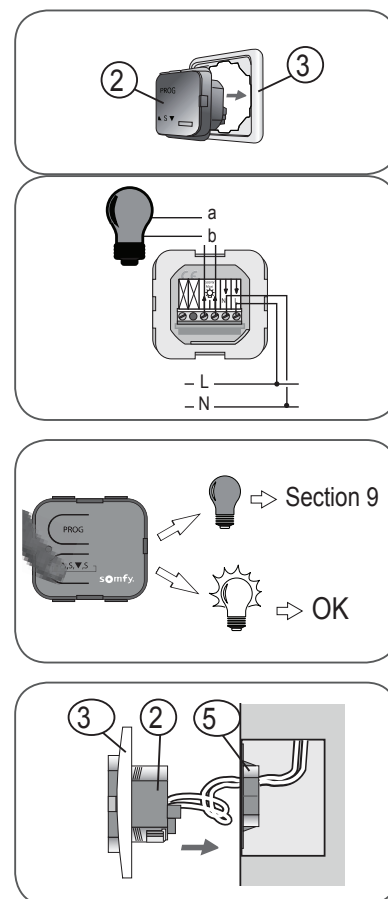
Somfy recommends fitting the indoor lighting receiver in place of the original switch.

- [1]. Check that the bulbs work.
- [2]. Switch off the power supply (fuse removed or circuit breaker off).
- [3]. Remove the original switch to access the housing for recessed mounting.
- [4]. Screw the mounting bracket (5) onto the housing using the screws supplied.



Attention: If the screws provided are lost, do not use roundhead screws. Only use flathead screws with a diameter of 3 mm.

- [5]. Place the indoor lighting receiver (2) inside the frame (3).
- [6]. Cable the indoor lighting receiver as shown in the diagram opposite
- (a) / (b) = Output
 - (L) = Live
 - (N) = Neutral
- [7]. Ensure that no pressure is exerted on the wires from the indoor lighting receiver.
- [8]. Check the indoor lighting receiver wiring: switch the power supply back on then press the manual control button for the indoor lighting receiver.
- > If the lamp corresponding to the indoor lighting receiver does not come on, see section 9 "Problems with the indoor lighting receiver?".
 - > If the lamp corresponding to the indoor lighting receiver comes on, the indoor lighting receiver is correctly cabled.
- [9]. Insert the indoor lighting receiver assembly (2) and the frame (3) into the bracket (5):
- Position the assembly so that "PROG" can be read.
 - Ensure that no pressure is exerted on the wires when the indoor lighting receiver is inserted in the bracket.
 - Press the indoor lighting receiver until it clicks; this means that the indoor lighting receiver has been fitted correctly on the bracket.
- [10]. Follow the steps described in section 6 "Programming the control point" before fitting the cover.



5.3 Mounting and assembly on a surface

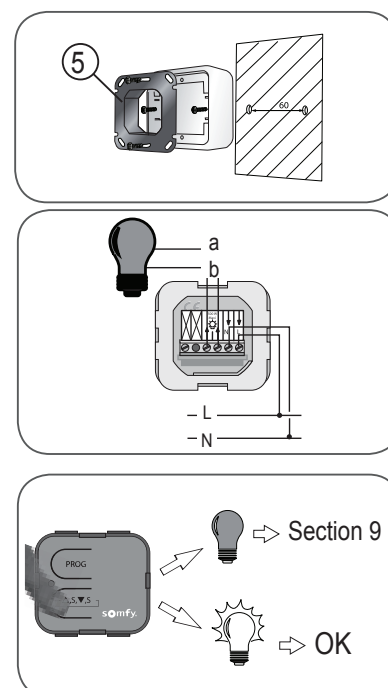
Somfy recommends fitting the indoor lighting receiver in place of the original switch.

Caution: The frame (3) is not used for surface mounting.

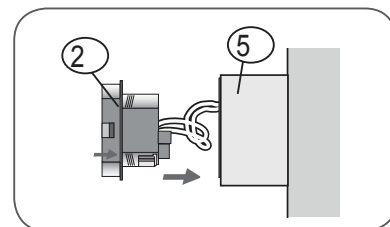
- [1]. Check that the bulbs work.
- [2]. Switch off the power supply (fuse removed or circuit breaker off).
- [3]. Remove the original switch to access the housing for recessed mounting.
- [4]. Mount the housing for surface mounting to the wall.
- [5]. Screw the bracket (5) onto the surface mounting housing using the screws supplied. If necessary, use the grips supplied.

Attention: If the screws provided are lost, do not use roundhead screws. Only use flathead screws with a diameter of 3 mm.

- [6]. Cable the indoor lighting receiver as shown in the diagram opposite
- (a) / (b) = Output
 - (L) = Live
 - (N) = Neutral
- [7]. Ensure that no pressure is exerted on the wires from the indoor lighting receiver.
- [8]. Check the indoor lighting receiver wiring: switch the power supply back on then press the manual control button for the indoor lighting receiver.
- > If the lamp corresponding to the indoor lighting receiver does not come on, see section 9 "Problems with the indoor lighting receiver?".
 - > If the lamp corresponding to the indoor lighting receiver comes on, the indoor lighting receiver is correctly cabled.



- [9]. Fit the indoor lighting receiver (2) into the bracket (5).
- Position the indoor lighting receiver so that "PROG" can be read.
 - Ensure that no pressure is exerted on the wires when the indoor lighting receiver is inserted in its bracket.
 - Press the indoor lighting receiver until it clicks; this means that the indoor lighting receiver has been fitted correctly on the bracket.
- [10]. Follow the steps described in section 6 "Programming the control point" before fitting the cover.



6. PROGRAMMING THE CONTROL POINT

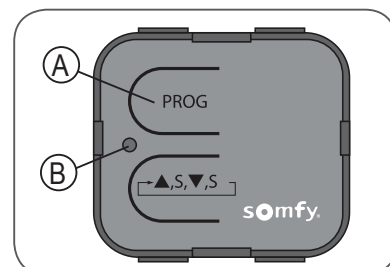
To commission the indoor lighting receiver, an RTS control point must be recorded in the indoor lighting receiver. This control point is used to switch bulbs connected to the indoor lighting receiver on or off.

N.B.: These instructions only describe the installation procedure for an "individual control" type indoor lighting receiver. Refer to the instructions for advanced functions available on the Internet (address on the back cover of these instructions) to install a "group control" or a "multiple control".

NE

6.1 Accessing the PROG button on the indoor lighting receiver

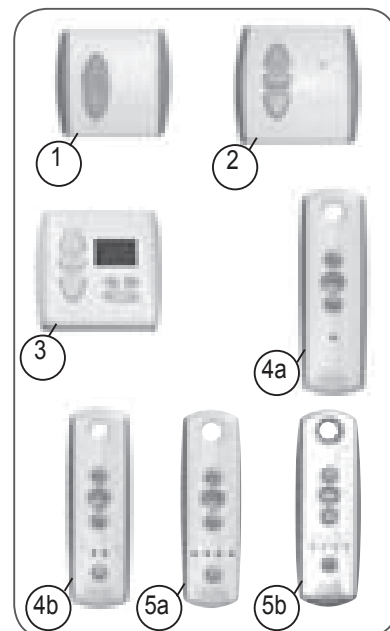
The PROG button (A) is located near the word "PROG", above the indicator light (B) and is shaped like a tab.



6.2 Identifying the control point

Identify the control point in the list below and refer to the section indicated to program the control point in the indoor lighting receiver:

- 1) Control point fixed to the wall with a single button, called a One-touch point, see paragraph 6.3;
- 2) Control point fixed to the wall with Up/STOP/Down buttons, called a Point with Up/STOP/Down buttons, see paragraph 6.4;
- 3) Programmer type control point, called a Timer, see paragraph 6.5;
- 4a) Telis 1 RTS remote control, see paragraph 6.6;
- 4b) Telis Soliris RTS remote control, see paragraph 6.6;
- 5a) Telis 4 RTS remote control, see paragraph 6.7;
- 5b) Telis 4 Soliris RTS remote control, see paragraph 6.7;



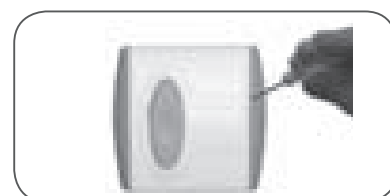
6.3 One-touch point

6.3.1 Identifying the model

- [1]. Check that the control point has an elongated button only.
- [2]. Remove the front cover from the one-touch point:

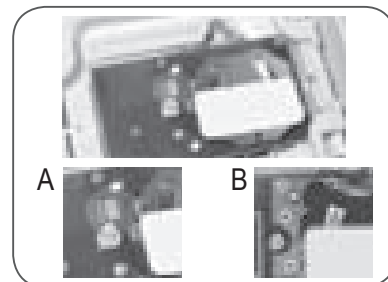
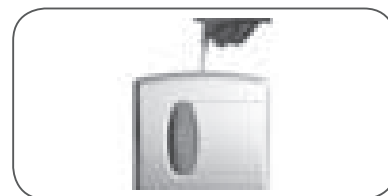
► **One-touch point with a white and grey front cover:**

- [1]. Gently remove the front cover with a flat, pointed tool (such as a flathead screwdriver) where the white section and the grey section join.
- [2]. Lever it and lift the cover, without using force, to detach the mounting lugs from the front cover.



► **One-touch point with a white front cover:**

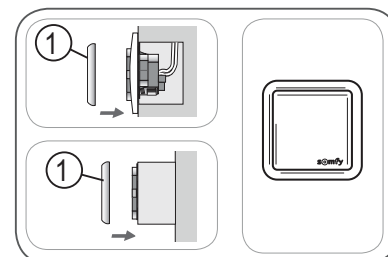
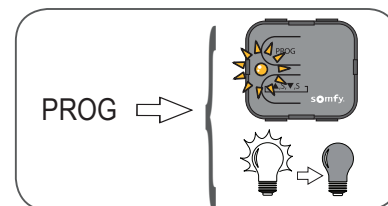
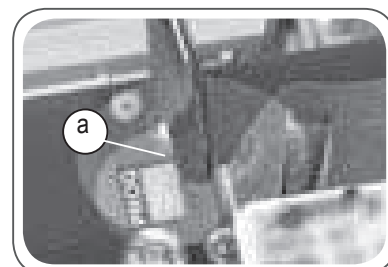
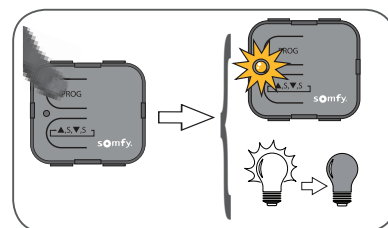
- [1]. Lever it with a flat, pointed tool (such as a flathead screwdriver), without using force, around the upper section of the front cover to detach it from its bracket.
- [2]. Turn the front cover over to find out the model:
 - > If there is a metal plate inscribed PROG next to the battery: model A.
 - > If there is no metal plate inscribed PROG next to the battery: model B.



6.3.2 Programming the control point in the indoor lighting receiver

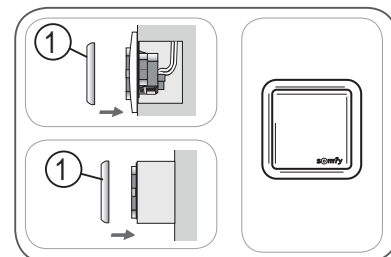
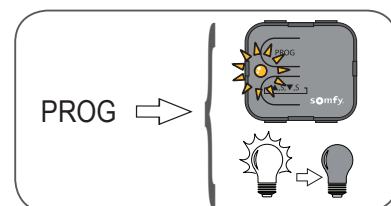
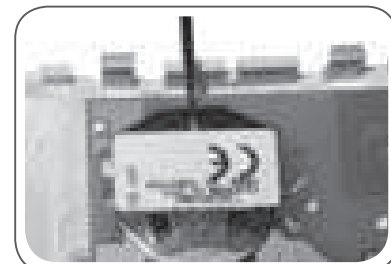
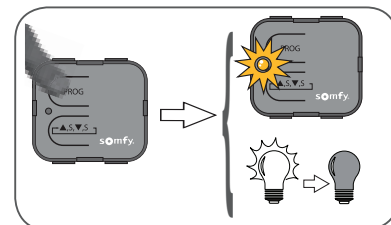
Model A:

- [1]. Restore the electric power supply.
- [2]. Press and hold the PROG button (A) on the indoor lighting receiver:
 - > The indicator light (B) comes on.
 - > The lamp connected to the indoor lighting receiver comes on and then goes off.
 - > The indoor lighting receiver PROG function is activated for approximately 2 minutes.
- [3]. Take the one-touch control point.
- [4]. Make a contact between the PROG metal plate (a) on the electrical circuit and the battery bracket using a flathead screwdriver:
 - > The indicator light for the indoor lighting receiver (B) flashes.
 - > The lamp connected to the indoor lighting receiver comes on and then goes off.
 - > The control point is saved in the indoor lighting receiver.
- [5]. Press the button on the control point:
 - > If the lamp corresponding to the indoor lighting receiver comes on, the indoor lighting receiver is operational.
 - > If the lamp corresponding to the indoor lighting receiver does not come on, contact the Somfy assistance service.
- [6]. Fit the cover (1) on the indoor lighting receiver:
 - Place the cover onto the indoor lighting receiver so that the Somfy logo can be seen in the bottom right-hand side.
 - Press on the cover until a click is heard: the cover is correctly fitted onto the indoor lighting receiver.
- [7]. Refit the control point front cover:
 - One-touch point with a white and grey front cover:
 - Insert the mounting lugs into their notches on one side of the front cover.
 - Press on the other side until it clicks, to fix the front cover in its bracket.
 - One-touch point with a white front cover:
 - Refit the front cover on its bracket



Model B:

- [1]. Restore the electric power supply.
- [2]. Press and hold the PROG button (A) on the indoor lighting receiver:
 - > The indicator light (B) comes on.
 - > The lamp connected to the indoor lighting receiver comes on and then goes off.
 - > The indoor lighting receiver PROG function is activated for approximately 2 minutes.
- [3]. Take the one-touch control point.
- [4]. Remove the battery from the one-touch control point using a plastic object.
- [5]. Press on the centre section of the one-touch point button.
- [6]. Refit the battery in the base of its bracket (with text legible).
- [7]. Press the one-touch point button again:
 - > The indicator light for the indoor lighting receiver (B) flashes.
 - > The lamp connected to the indoor lighting receiver comes on and then goes off.
 - > The control point is saved in the indoor lighting receiver.
- [8]. Press the one-touch control point button:
 - If the lamp corresponding to the indoor lighting receiver comes on, the indoor lighting receiver is operational.
 - If the lamp corresponding to the indoor lighting receiver does not come on, contact the Somfy assistance service.
- [9]. Fit the cover (1) on the indoor lighting receiver:
 - Place the cover onto the indoor lighting receiver so that the Somfy logo can be seen in the bottom right-hand side.
 - Press on the cover until a click is heard: the cover is correctly fitted onto the indoor lighting receiver.
- [10]. Refit the control point front cover:
 - One-touch point with a white and grey front cover:
 - Insert the mounting lugs into their notches on one side of the front cover.
 - Press on the other side until it clicks, to fix the front cover in its bracket.
 - One-touch point with a white front cover:
 - Refit the front cover on its bracket

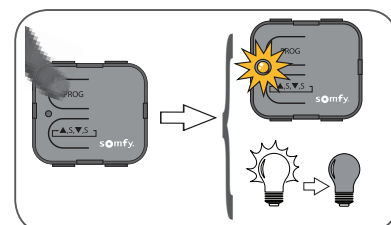
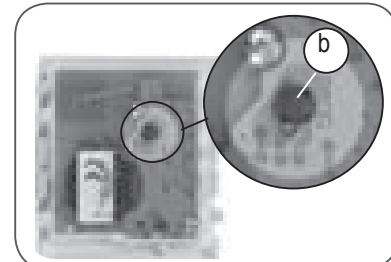
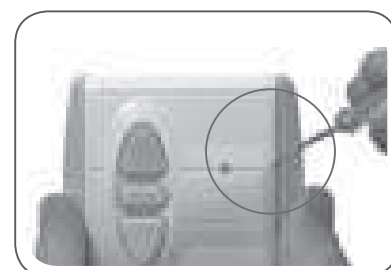
**6.4 Point with Up/STOP/Down buttons****6.4.1 Checking the compatibility**

- [1]. Make sure that the mains power supply is off.
- [2]. Remove the front cover from the control point:
 - Gently remove the front cover with a flat, pointed tool (such as a flathead screwdriver) where the white section and the grey section join.
 - Lever it and lift the cover, without using force, to detach the mounting lugs from the front cover.
- [3]. Turn the front cover over:
 - > The PROG button is located next to the battery (b).

Attention! If after removing the front cover, no PROG button is found, this means that the control point is not compatible: It cannot be programmed in the indoor lighting receiver.

6.4.2 Programming the control point in the indoor lighting receiver

- [1]. Restore the mains power supply.
- [2]. Press and hold the PROG button (A) on the indoor lighting receiver:
 - > The indicator light (B) comes on.
 - > The lamp connected to the indoor lighting receiver comes on and then goes off.
 - > The indoor lighting receiver PROG function is activated for approximately 2 minutes.



- [3]. Quickly press the PROG button (b) on the control point:
 - > The indicator light for the indoor lighting receiver (B) flashes.
 - > The lamp connected to the indoor lighting receiver comes on and then goes off.
 - > The control point is saved in the indoor lighting receiver.
- [4]. Press the "Up" switch at the control point:
 - If the lamp corresponding to the indoor lighting receiver comes on, the indoor lighting receiver is operational.
 - If the lamp corresponding to the indoor lighting receiver does not come on, contact the Somfy assistance service.
- [5]. Refit the control point front cover:
 - Insert the mounting lugs into their notches on one side of the front cover.
 - Press on the other side until it clicks, to fix the front cover in its bracket.
- [6]. Fit the cover (1) on the indoor lighting receiver:
 - Place the cover onto the indoor lighting receiver so that the Somfy logo can be seen in the bottom right-hand side.
 - Press on the cover until a click is heard: the cover is correctly fitted onto the indoor lighting receiver.

6.5 Timer

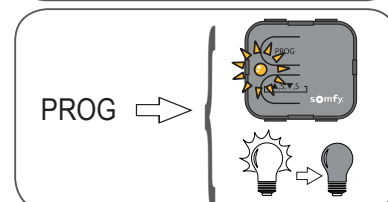
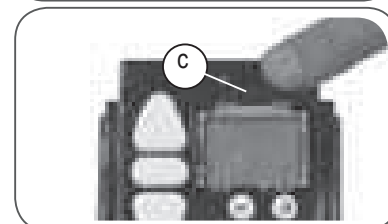
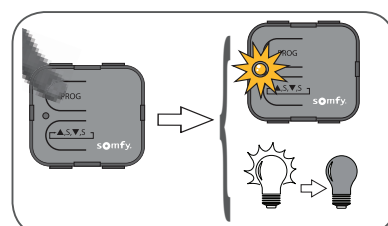
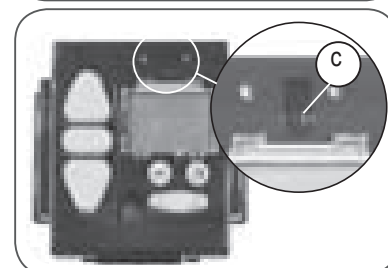
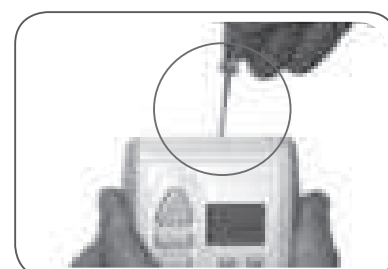
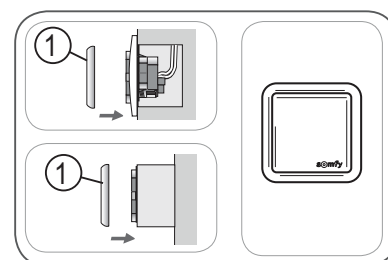
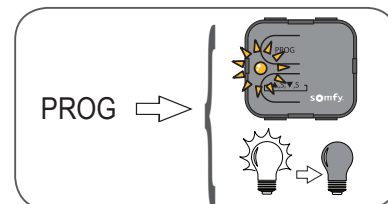
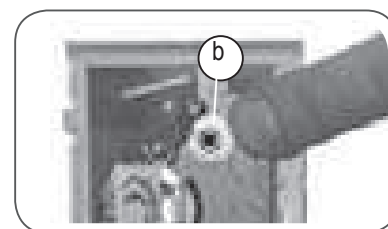
6.5.1 Checking the compatibility

- [1]. Make sure that the mains power supply is off.
- [2]. Remove the front cover:
 - Lever it with a flat, pointed tool (such as a flathead screwdriver), without using force, around the upper section of the front cover to detach it from its bracket.
 - > The PROG button is located on top of the screen and is shaped like a tab (c).

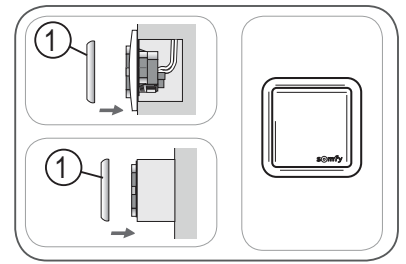
Attention! If after removing the front cover, no PROG button is found, this means that the control point is not compatible: It cannot be programmed in the indoor lighting receiver.

6.5.2 Programming the control point in the indoor lighting receiver

- [1]. Restore the mains power supply.
- [2]. Press and hold the PROG button (A) on the indoor lighting receiver:
 - > The indicator light (B) comes on.
 - > The lamp connected to the indoor lighting receiver comes on and then goes off.
 - > The indoor lighting receiver PROG function is activated for approximately 2 minutes.
- [3]. Quickly press the tab (c) on the control point:
 - > The indicator light for the indoor lighting receiver (B) flashes.
 - > The lamp connected to the indoor lighting receiver comes on and then goes off.
 - > The control point is saved in the indoor lighting receiver.
- [4]. Press the "Up" button on the control point:
 - If the lamp corresponding to the indoor lighting receiver comes on, the indoor lighting receiver is operational.
 - If the lamp corresponding to the indoor lighting receiver does not come on, contact the Somfy assistance service.



- [5]. Refit the control point front cover:
 - Insert the front cover on its bracket, allowing the buttons to come through their housings.
 - Press the front until it clicks, to fix the front cover in its bracket.
- [6]. Fit the cover (1) on the indoor lighting receiver:
 - Place the cover onto the indoor lighting receiver so that the Somfy logo can be seen in the bottom right-hand side.
 - Press on the cover until a click is heard: the cover is correctly fitted onto the indoor lighting receiver.



6.6 Telis 1 RTS/Telis Soliris RTS remote controls

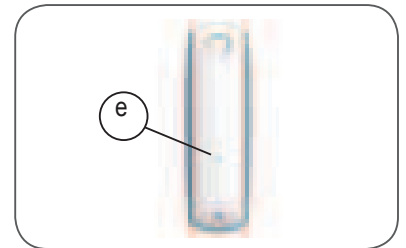
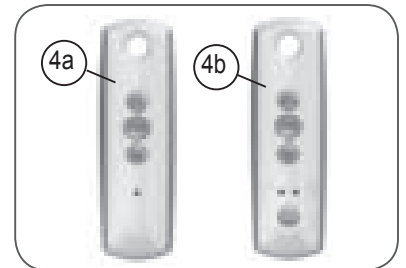
The Telis 1 RTS has 1 indicator light (4a) and the Telis Soliris RTS has 2 indicator lights (4b).

If the remote control has more than 2 indicator lights, refer to the section "Telis 4 RTS/ Telis 4 Soliris RTS remote controls".

6.6.1 Accessing the PROG button on the Telis

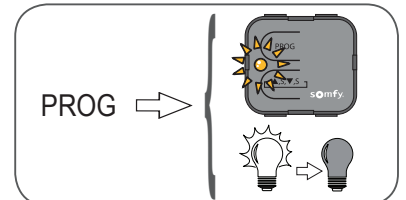
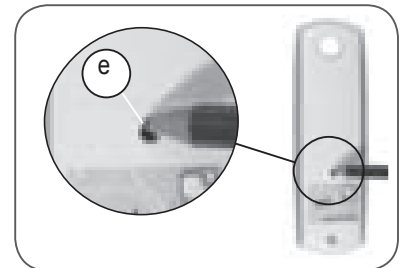
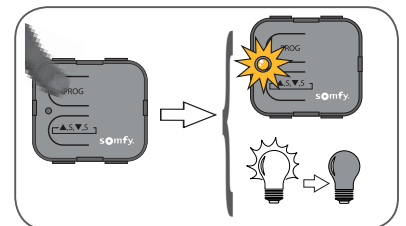
Turn the Telis over:

- > The PROG button (e) is located on the rear panel.

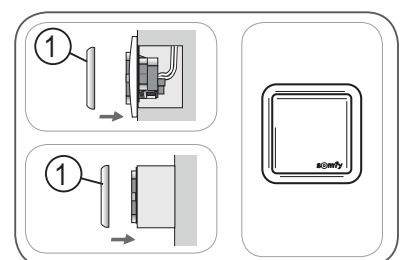


6.6.2 Programming the control point in the indoor lighting receiver

- [1]. Restore the mains power supply.
- [2]. Press and hold the PROG button (A) on the indoor lighting receiver:
 - > The indicator light (B) comes on.
 - > The lamp connected to the indoor lighting receiver comes on and then goes off.
 - > The indoor lighting receiver PROG function is activated for approximately 2 minutes.
- [3]. Press the PROG button (e) on the Telis briefly with the tip of a pencil:
 - > The indicator light for the indoor lighting receiver (B) flashes.
 - > The lamp connected to the indoor lighting receiver comes on and then goes off.
 - > The control point is saved in the indoor lighting receiver.
- [4]. Press the Up button on the Telis:
 - If the lamp corresponding to the indoor lighting receiver comes on, the indoor lighting receiver is operational.
 - If the lamp corresponding to the indoor lighting receiver does not come on, contact the Somfy assistance service.
- [5]. Fit the cover (1) on the indoor lighting receiver:



- Place the cover onto the indoor lighting receiver so that the Somfy logo can be seen in the bottom right-hand side.
- Press on the cover until a click is heard: the cover is correctly fitted onto the indoor lighting receiver.



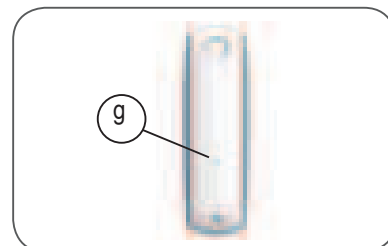
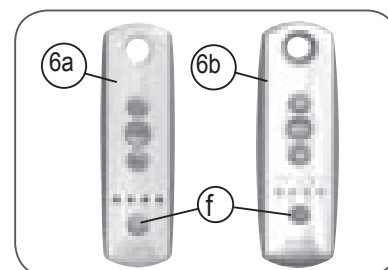
EN

6.7 Telis 4 RTS/Telis 4 Soliris RTS remote controls

The Telis 4 RTS (6a) and Telis 4 Soliris RTS (6b) have 4 indicator lights.

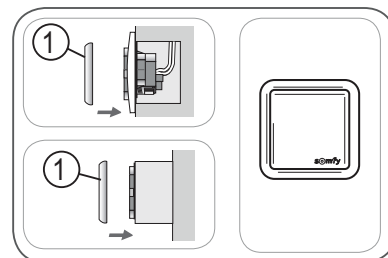
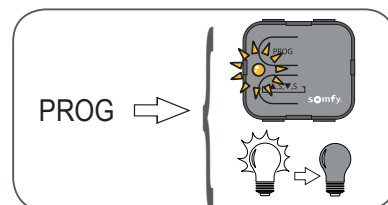
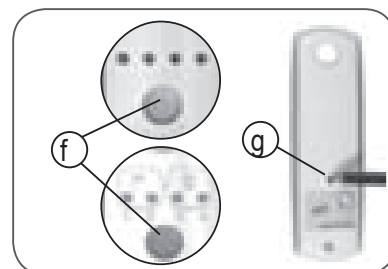
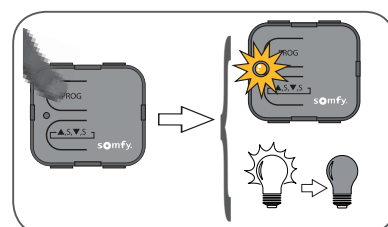
6.7.1 Accessing the PROG button on the Telis

- [1]. On the Telis, select the channel which will control the lamp connected to the indoor lighting receiver with the button (f).
- [2]. Turn the Telis over:
 - > The PROG button (g) is located on the rear panel.



6.7.2 Programming the control point in the indoor lighting receiver

- [1]. Restore the mains power supply.
- [2]. Press and hold the PROG button (A) on the indoor lighting receiver:
 - > The indicator light (B) comes on.
 - > The lamp connected to the indoor lighting receiver comes on and then goes off.
 - > The indoor lighting receiver PROG function is activated for approximately 2 minutes.
- [3]. On the Telis, select the channel which will control the lamp connected to the indoor lighting receiver with the button (f).
- [4]. Press the PROG button (g) on the Telis briefly with the tip of a pencil:
 - > The indicator light for the indoor lighting receiver (B) flashes.
 - > The lamp connected to the indoor lighting receiver comes on and then goes off.
 - > The control point is saved in the indoor lighting receiver.
- [5]. Press the Up button on the Telis:
 - If the lamp corresponding to the indoor lighting receiver comes on, the indoor lighting receiver is operational.
 - If the lamp corresponding to the indoor lighting receiver does not come on, contact the Somfy assistance service.
- [6]. Fit the cover (1) on the indoor lighting receiver:
 - Place the cover onto the indoor lighting receiver so that the Somfy logo can be seen in the bottom right-hand side.
 - Press on the cover until a click is heard: the cover is correctly fitted onto the indoor lighting receiver.



7. REPLACING A LOST OR BROKEN CONTROL POINT

If the control point programmed in the indoor lighting receiver is lost or broken, another RTS control point must be programmed in order to switch the bulb connected to the indoor lighting receiver on and off.

Attention: no more than 12 control points can be recorded in an indoor lighting receiver.

- Take another control point which is compatible with the indoor lighting receiver.
- Follow the steps described in the section "Programming the control point in the indoor lighting receiver" according to the control point model.

Attention: If after following this operation, the indicator light (B) on the indoor lighting receiver does not come on, contact Somfy assistance service for advice on replacement.

8. EVERYDAY USE OF THE INDOOR LIGHTING RECEIVER

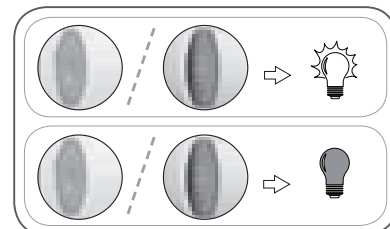
8.1 Operating

The lighting operation differs according to the control point connected to the indoor lighting receiver.

- There are three categories of control point:
- One-touch point;
- Telis 4 RTS and Telis 4 Soliris RTS remote controls;
- Other RTS control points: Point with Up//STOP/Down buttons, timer, Telis 1 RTS remote control and Telis Soliris RTS remote control.

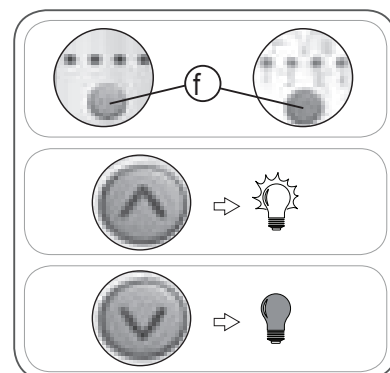
8.1.1 Operation using a One-touch point

Press the button on the One-touch point to switch the bulb connected to the indoor lighting receiver on and off: On/Off/On/Off/On etc.



8.1.2 Operation using a Telis 4 RTS or Telis 4 Soliris RTS remote control

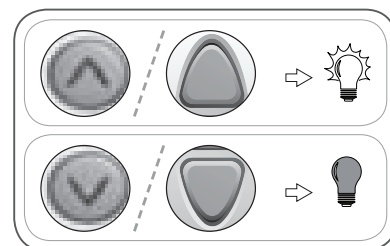
On the remote control, select the channel which will control the lamp connected to the indoor lighting receiver with the button (f).



- ▶ **To switch the bulb on:** Press the Up button:
- ▶ **To switch the bulb off:** Press the Down button:

8.1.3 Operation with other RTS control points

- ▶ **To switch the bulb on:** Press the Up button:



- ▶ **To switch the bulb off:** Press the Down button:

8.2 Maintenance

- Clean the indoor lighting receiver with a damp cloth using a domestic multipurpose or glass cleaning product.
- Do not soak the indoor lighting receiver in any liquid.

9. PROBLEMS WITH THE INDOOR LIGHTING RECEIVER?

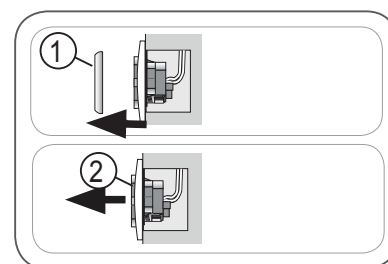
Problem	Possible causes	Solutions
The indoor lighting receiver indicator light does not come on.	The indoor lighting receiver wiring is incorrect.	Switch off the power supply and check the wiring – see section 5 "Mounting the indoor lighting receiver".
	The power supply is off.	Restore the mains power supply.
	The fuse for the indoor lighting receiver has blown.	Change the fuse – see section 10 "Changing the fuse".
The indoor lighting receiver cannot be used after following the procedure step by step.	The procedure for saving the control point in the indoor lighting receiver has failed.	Contact the Somfy assistance service.
The bulb connected to the indoor lighting receiver does not come on or go off after pressing the corresponding button on the control point.	The control point is too far from the indoor lighting receiver.	Bring the indoor lighting receiver closer and try pressing a button on the control point again. If it still does not work, replace the control point battery.
	The control point battery is flat.	Replace the battery with a battery with the same specifications – refer to the control point instructions.
	The bulb has blown.	Switch off the power supply and replace the faulty bulb with a new bulb. Restore the mains power supply.
The bulb connected to the indoor lighting receiver comes on after pressing the Down button on the control point. The bulb connected to the indoor lighting receiver goes off after pressing the Up button on the control point.	The remote control is being held the wrong way round.	Turn the remote control around so that the indicator light is below the Up/my/Down buttons.
	The control point is mounted the wrong way round.	Disassemble the control point and refit it the other way round.
The control point switches another bulb on or off.	There has been a problem when programming the control point in the indoor lighting receiver.	Contact the Somfy assistance service.

For any problems or unresolved questions, please contact the Somfy assistance service on the number given on the back cover of these instructions.

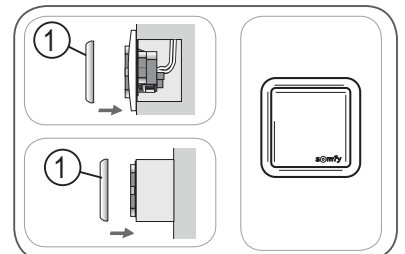
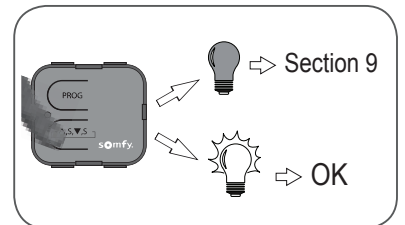
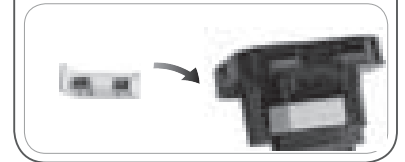
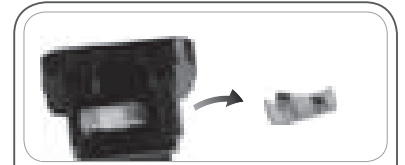
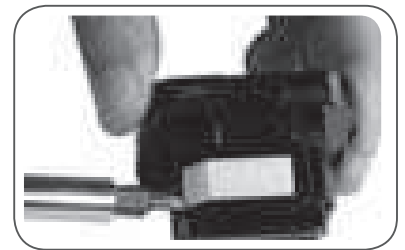
10. CHANGING THE FUSE

Environment! Do not dispose of the used fuse with household waste, see paragraph 2.3.

- [1]. Switch off the power supply.
- [2]. Remove the cover (1) from the indoor lighting receiver:
 - Gently remove the cover using a flat, pointed tool (such as a flathead screwdriver) on one of the sides, around the notch.
 - Lever it and lift the cover upwards, without using force, to detach the mounting lugs from the cover.
- [3]. Remove the indoor lighting receiver (2) from the frame (or the surface mounting housing), taking care not to pull the supply cables.
 - > The fuse is located in the removable fuse-holder which shows the fuse part numbers.



- [4].** Remove the removable fuse-holder using a flathead screwdriver:
- Gently remove the removable fuse-holder using a flat, pointed tool (such as a flathead screwdriver) around the notch on the edge of the rounded side.
 - Gently lever it to detach the mounting lug on the other side of the removable fuse-holder.
- [5].** Remove the fuse from the fuse-holder by pushing it out of the retaining bracket.
- [6].** Insert a fuse of the same specifications.
- [7].** Refit the fuse-holder on the indoor lighting receiver:
- Insert the mounting lug in its notch.
 - Slide the other end into the notch.
 - Press on the rounded end until the fuse-holder clicks into the indoor lighting receiver.
- [8].** Make sure that power supply cables are always connected:
- > Otherwise refit the wires in the corresponding terminals - see section 5 "Mounting the indoor lighting receiver".
- [9].** Fit the indoor lighting receiver (2) into the bracket (5).
- Position the indoor lighting receiver so that "PROG" can be read.
 - Press the indoor lighting receiver until it clicks; this means that the indoor lighting receiver has been fitted correctly on the bracket.
- [10].** Restore the mains power supply.
- [11].** Check that the fuse works correctly:
- [12].** Press the manual control button for the indoor lighting receiver (C).
- If the lamp corresponding to the indoor lighting receiver does not come on, see section 9 "Problems with the indoor lighting receiver?".
 - If the lamp connected to the indoor lighting receiver lights up, then the new fuse is correct.
- [13].** Refit the cover (1) on the indoor lighting receiver:
- Place the cover onto the indoor lighting receiver so that the Somfy logo can be seen in the bottom right-hand side.
 - Press on the cover until a click is heard: the cover is correctly fitted onto the indoor lighting receiver.



NE