

Camera Somfy Protect + TaHoma



Indoor camera compatibility TaHoma



In TaHoma = Control
=> "my home"



• Video rec - Auto
if intrusion



• Video playback



• Live streaming



• Take pictures



• Privacy shutter



• 2way audio



• Video definition
change

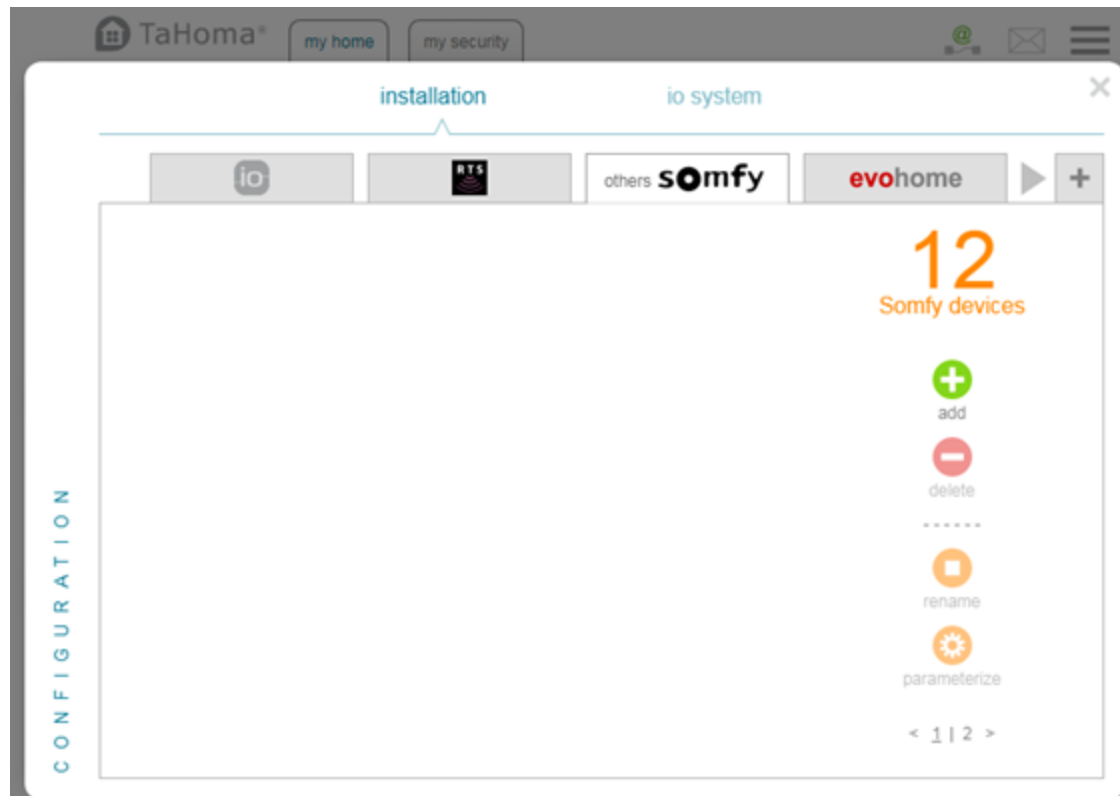


- ❑ Somfy Protect app is required to install the Somfy Indoor camera.
- ❑ Somfy Protect and TaHoma can have the same log-in details
- ❑ It is possible to view and control your indoor camera via the TaHoma app. Limited functionality is available via the TaHoma website – we recommend using the app instead.
- ❑ It is **not** possible to use the Somfy Indoor Camera in Agenda, Smart or Scenarios. As such the Somfy Protect Camera cannot be combined with TaHoma sensors such as movement detectors. If a TaHoma sensor detects something it cannot trigger the Camera.
- ❑ In case the Somfy Indoor camera detects movement, the user is alerted via push message by the Somfy Protect app and recording is started. This recording is also available from the TaHoma app.

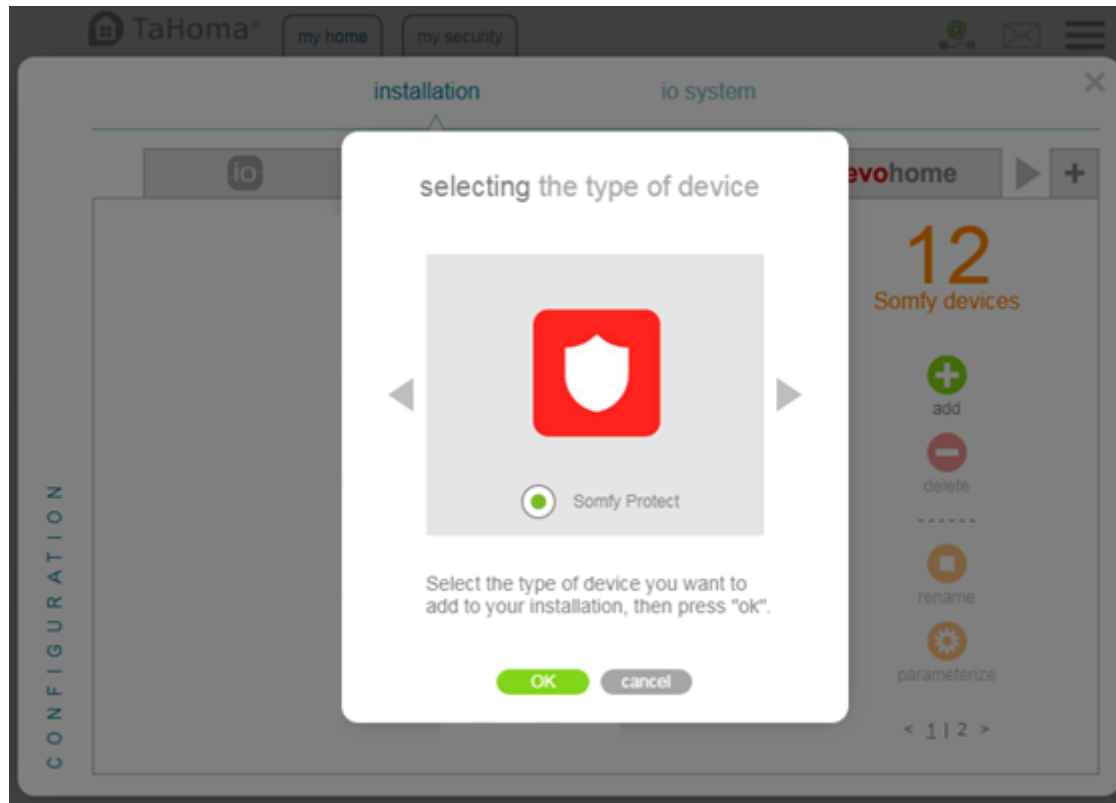
Go to Configuration



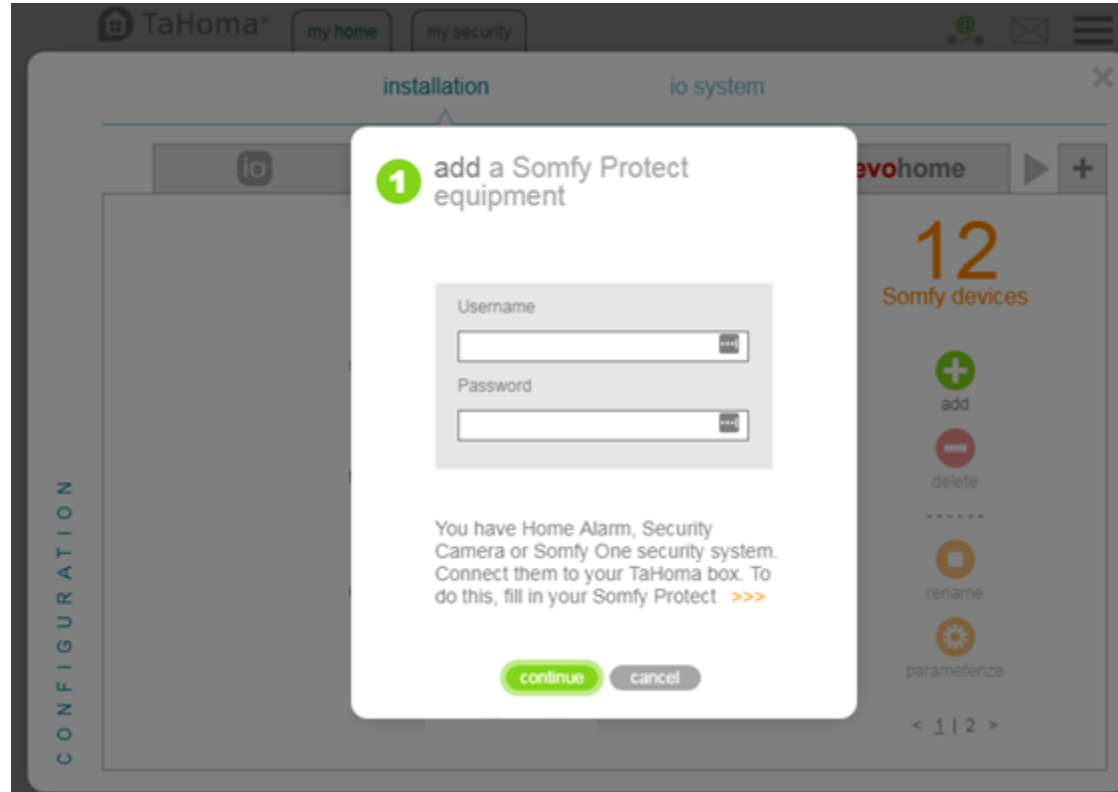
Click Add



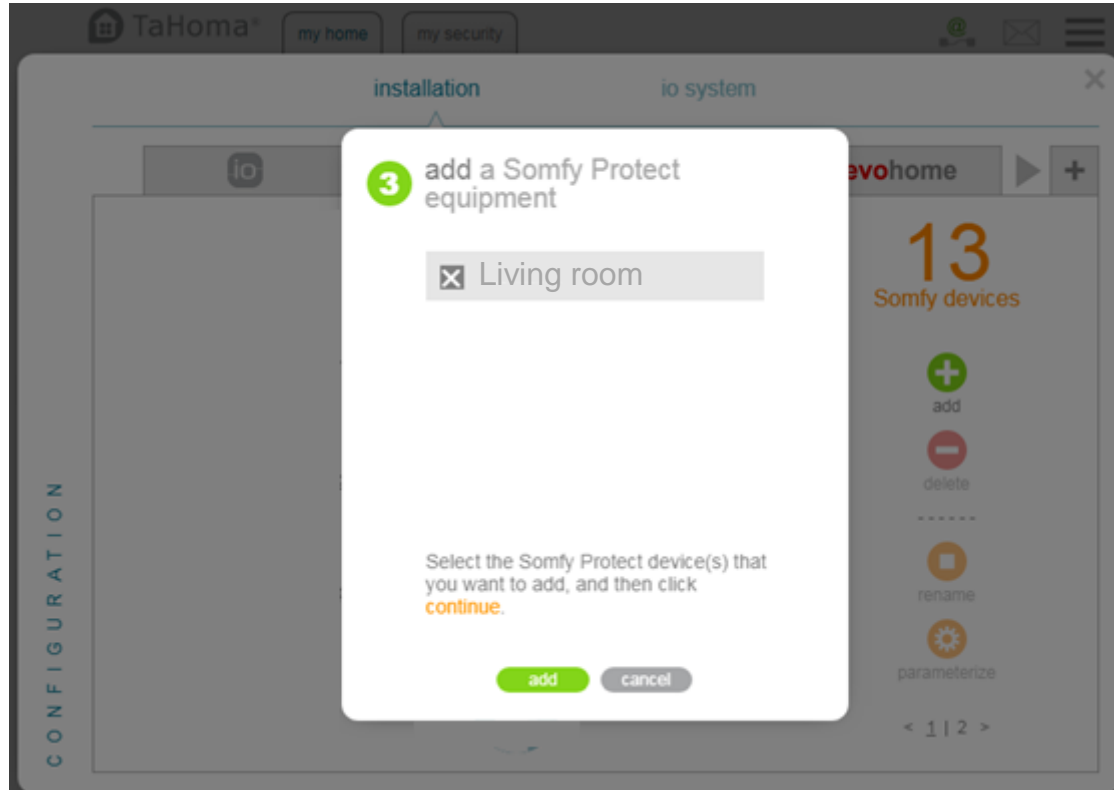
Choose 'Somfy Protect'



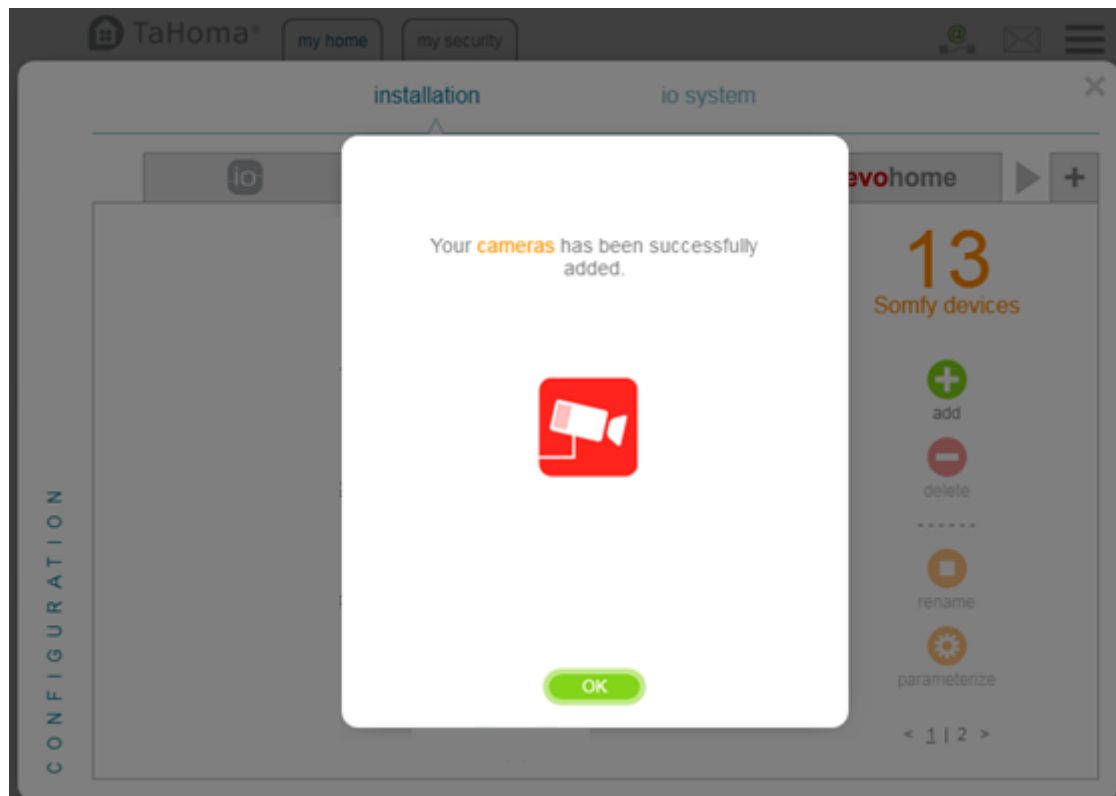
Enter login details Somfy Protect



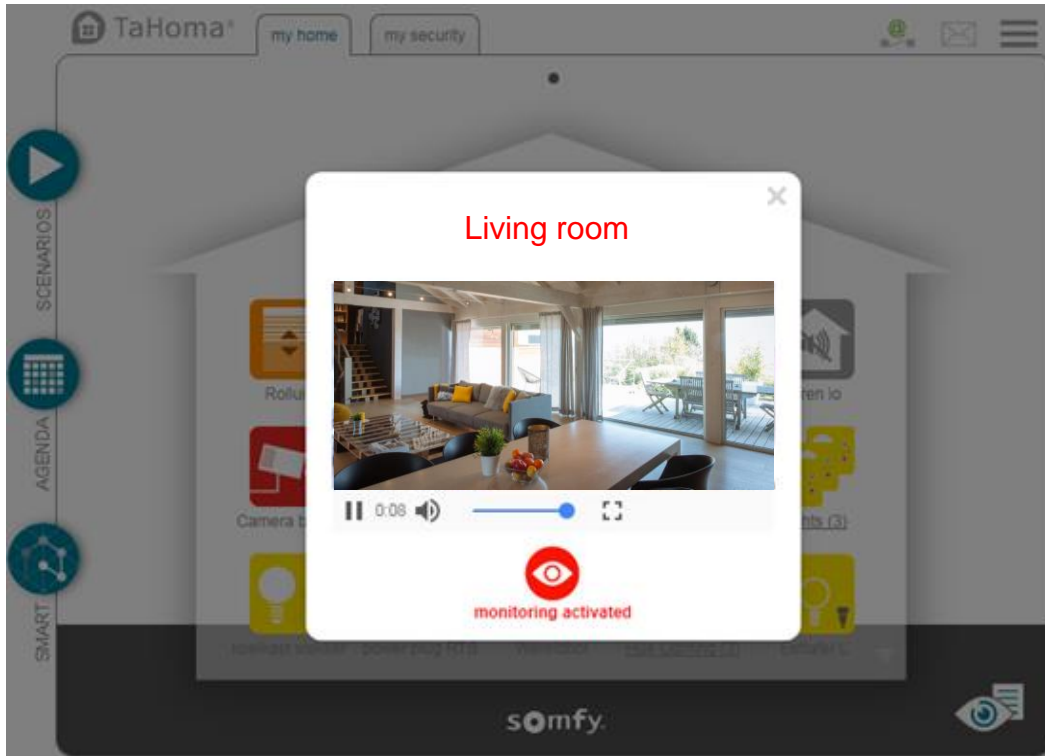
Select the product(s) you want to add



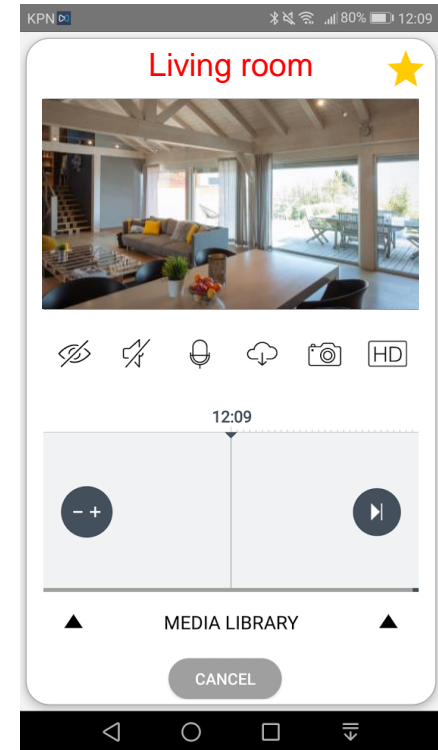
Confirmation



Real time viewing via Web or App

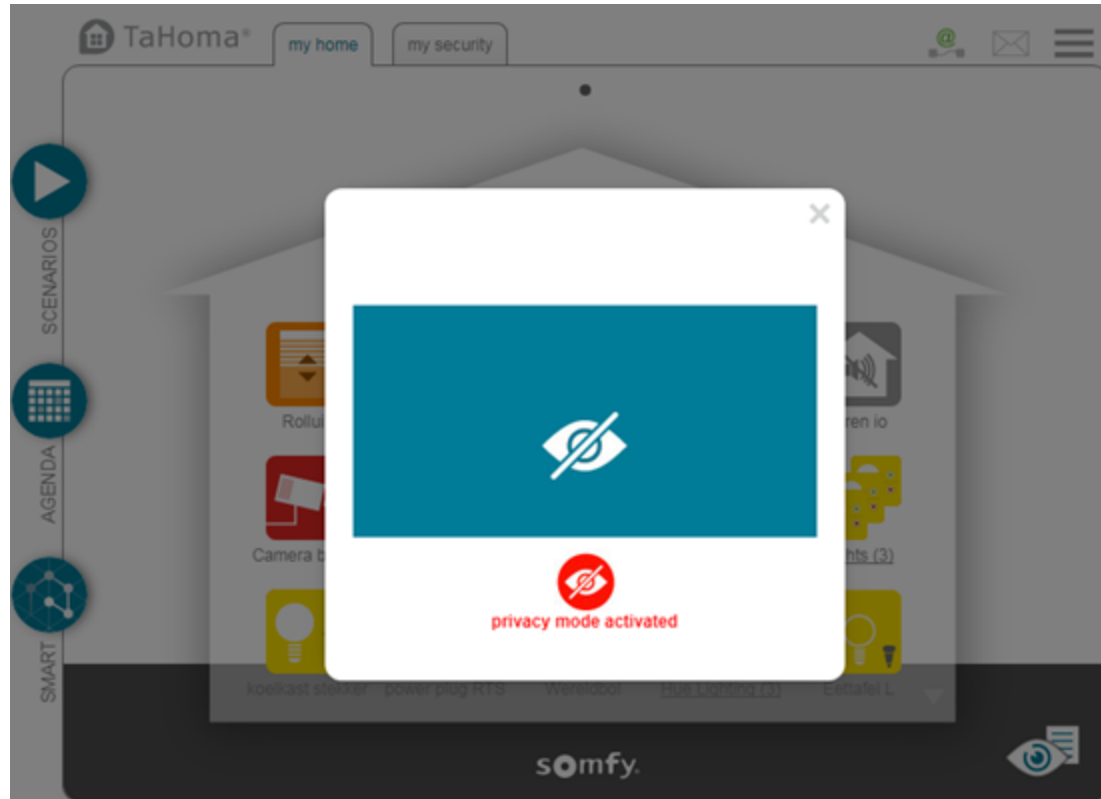


Web (limited features)



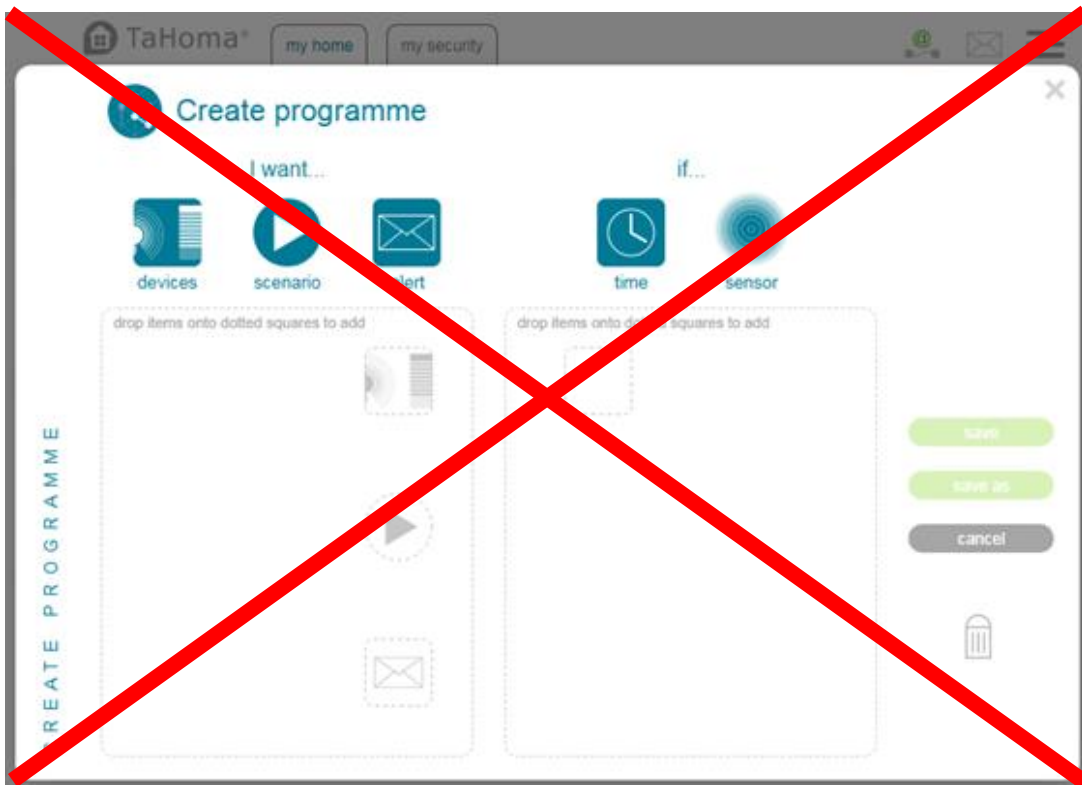
App (additional features)

Activate/De-activate Privacy mode





Not available in SMART Programmes





Zone 1

Not available in MY SECURITY

